

Class: MSc

Subject : Application of IT- Basics and Advance Excel

Chapter: Unit 1 Chapter 8

Chapter Name: Presenting Data and Charts

Introduction

- *Charts are used make it easier to understand large quantities of data and the relationship between different series of data by displaying series of numeric data in a graphical format.*
- *When you create a chart in Excel you will first enter the data on a worksheet and then create the chart.*
- *Excel automatically links the data to the chart so that if data is altered, added or deleted, the chart will update accordingly.*

Chart Terms

- Select the data that you wish to create the chart from
- Click on the 'Insert' tab

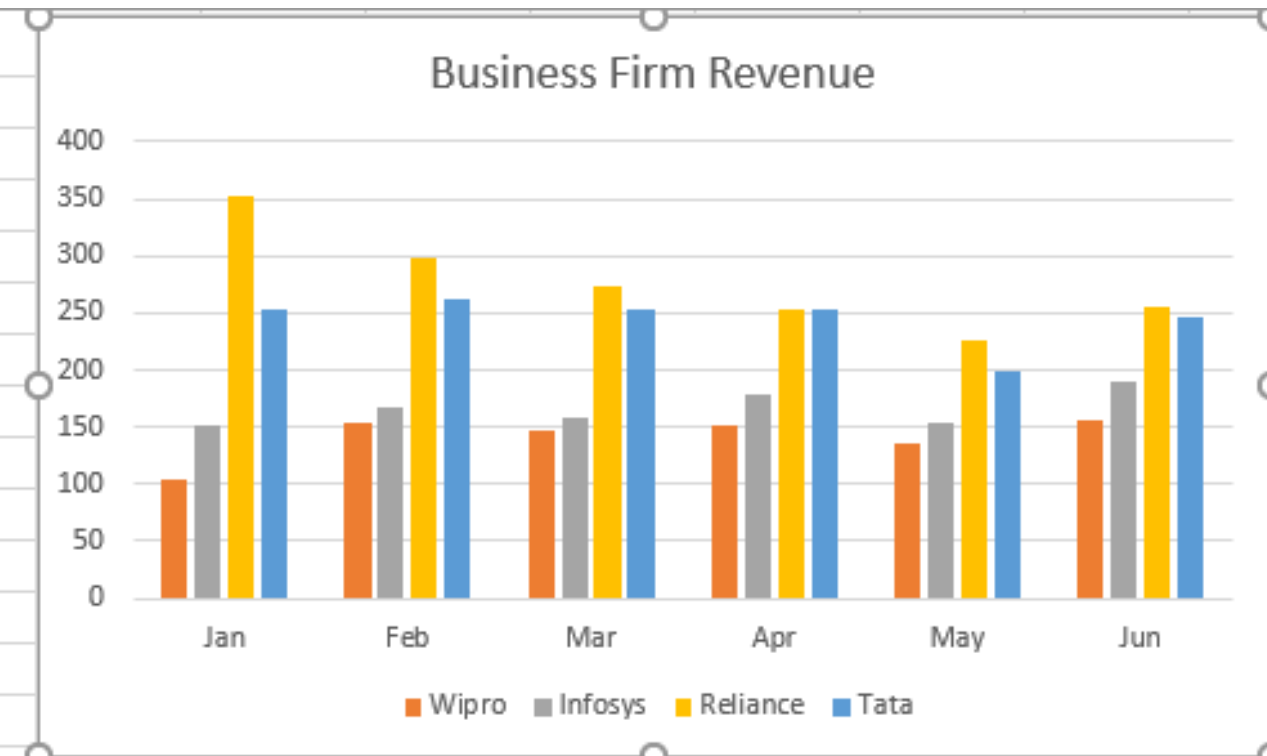
The screenshot shows the Microsoft Excel interface with the 'Insert' tab selected in the ribbon. The 'Charts' group is highlighted with a red box, showing options like 'Recommended Charts' and 'PivotChart'. Below the ribbon, a data table for 'Revenue' is visible, with columns for months (Jan-Jun) and a 'Total' column. The data is highlighted with a green border.

	A	B	C	D	E	F	G	H	I	J	K	L
1												
2	Revenue	Jan	Feb	Mar	Apr	May	Jun	Total				
3												
4	Wipro	105	207	158	458	365	825	2118				
5	Infosys	268	658	952	487	157	456	2978				
6	Reliance	990	256	457	958	854	665	4180				
7	Tata	866	987	157	485	256	458	3209				
8								0				
9	Total	2229	2108	1724	2388	1632	2404	12485				

Introduction

➤ This is how chart look like

Business Firm Revenues							
Revenue	Jan	Feb	Mar	Apr	May	Jun	Total
Wipro	105	154	148	152	135	155	849
Infosys	152	168	159	178	154	189	1000
Reliance	352	298	273	252	225	255	1655
Tata	253	262	254	254	198	247	1468
Total	862	882	834	836	836	846	5096



Type of charts

File Home Insert Page Layout Formulas Data Review View Help Tell me what you want to do

PivotTable Recommended PivotTables Tables

Pictures SmartArt Screenshot Illustrations

A2 Revenue

	A	B	C	D	E
1					
2	Revenue	Jan	Feb	Mar	Apr
3					
4	Wipro	105	154	148	152
5	Infosys	152	168	159	178
6	Reliance	352	298	273	252
7	Tata	253	262	254	254
8					
9	Total	862	882	834	836
10					
11					
12					
13					
14					
15					
16					
17					
18					
19					
20					
21					
22					

Insert Chart

Recommended Charts All Charts

Recent Templates

Column

Line

Pie

Bar

Area

X Y (Scatter)

Stock

Surface

Radar

Treemap

Sunburst

Histogram

Box & Whisker

Waterfall

Combo

Clustered Column

Chart Title

Chart Title

Chart Title

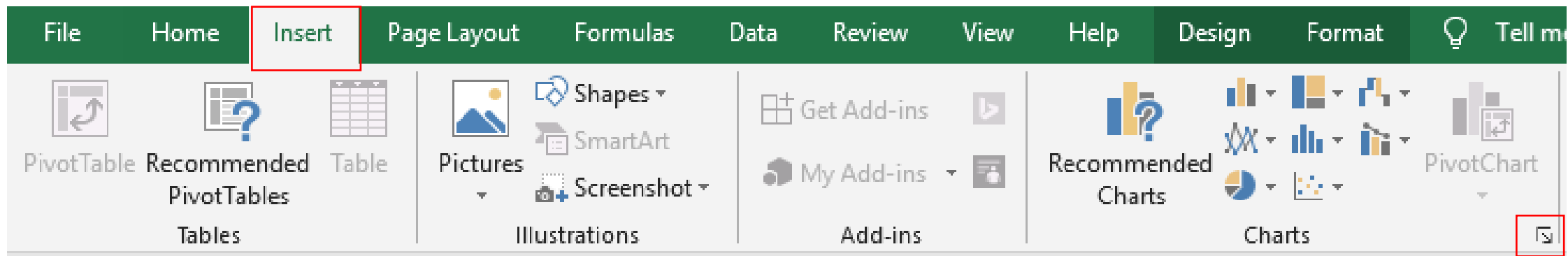
OK Cancel

Type of charts

- **Column** - Shows data changes over a period of time or illustrates comparisons among items
- **Line** - Shows trends in data at equal intervals
- **Pie** - Shows proportional size of items that make up a data series; only shows 1 data series
- **Bar** - Illustrates comparisons among individual items
- **XY (scatter)** - Shows relationships among numeric values in several data series or plots two groups of numbers as one series of XY coordinates.
- **Stock** - Measures volume and has two axes; one for measuring volume, the other for stock prices

Column Chart

Column chart shows data changes over a period of time or illustrates comparisons among items

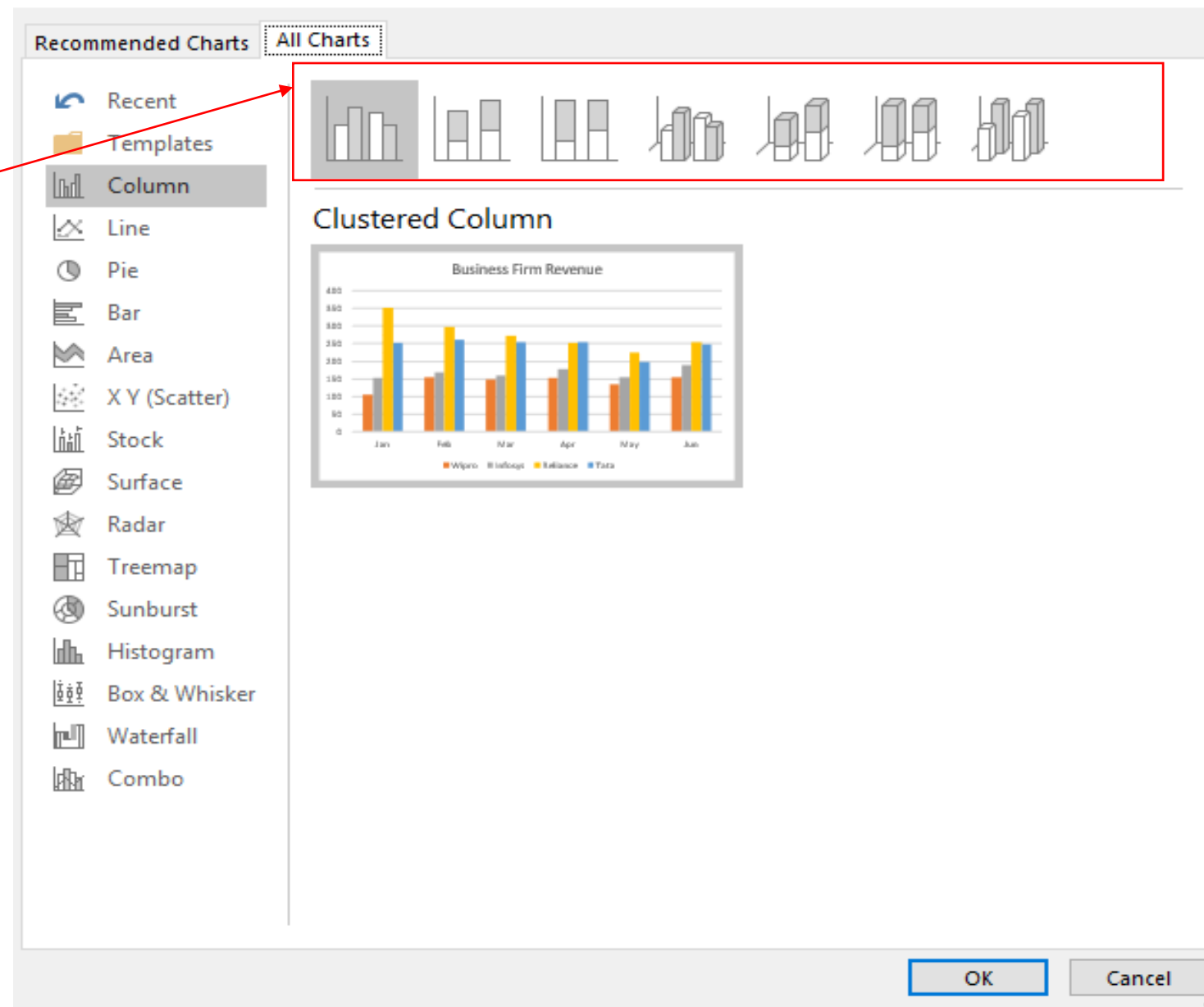


Column Chart

This are various option available in column chart

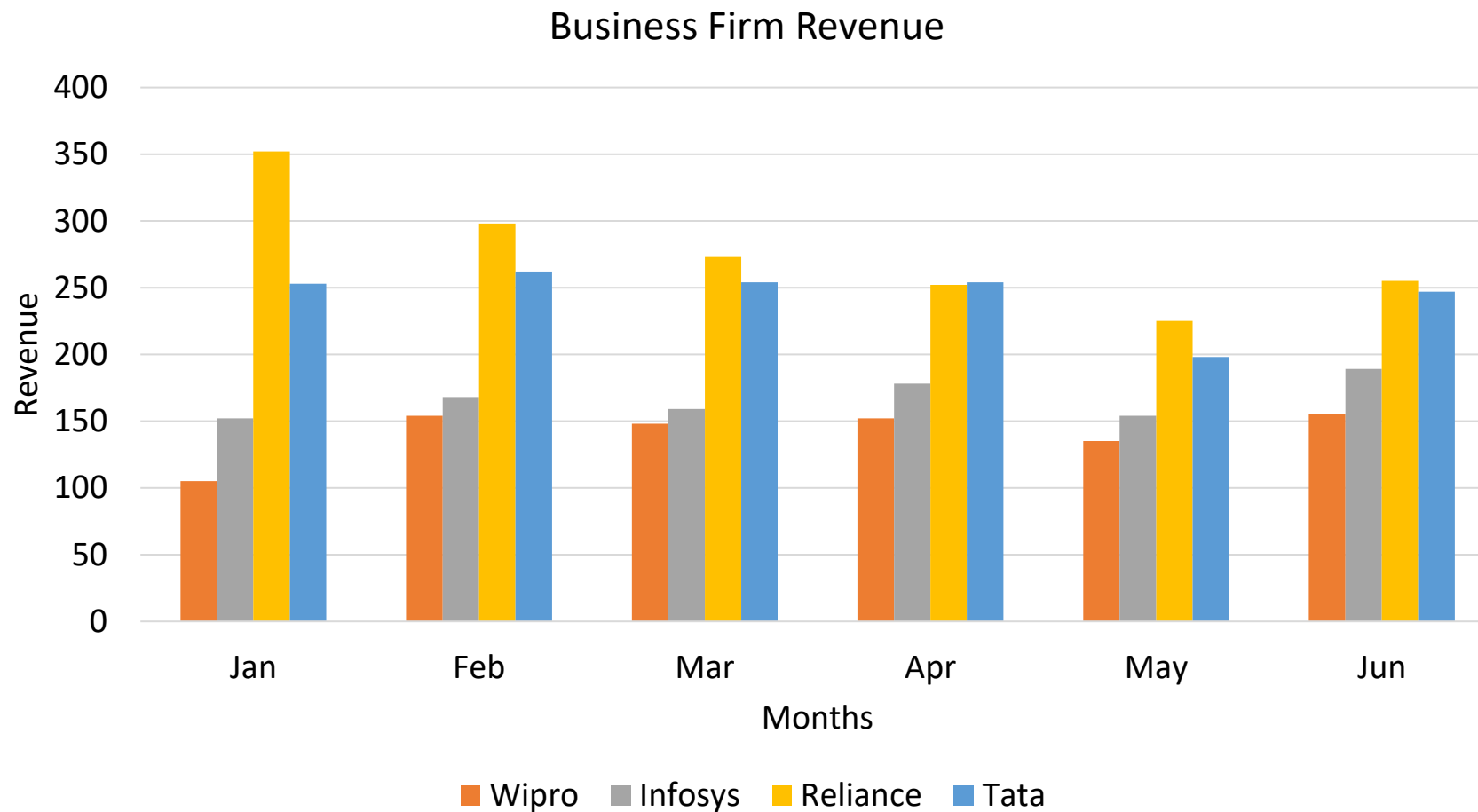
For every type of chart different options are available

Change Chart Type



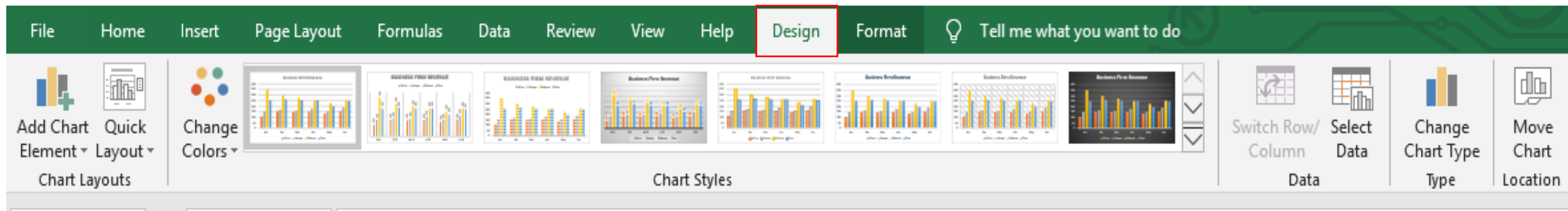
Column Chart

This is how column chart looks like for the given data



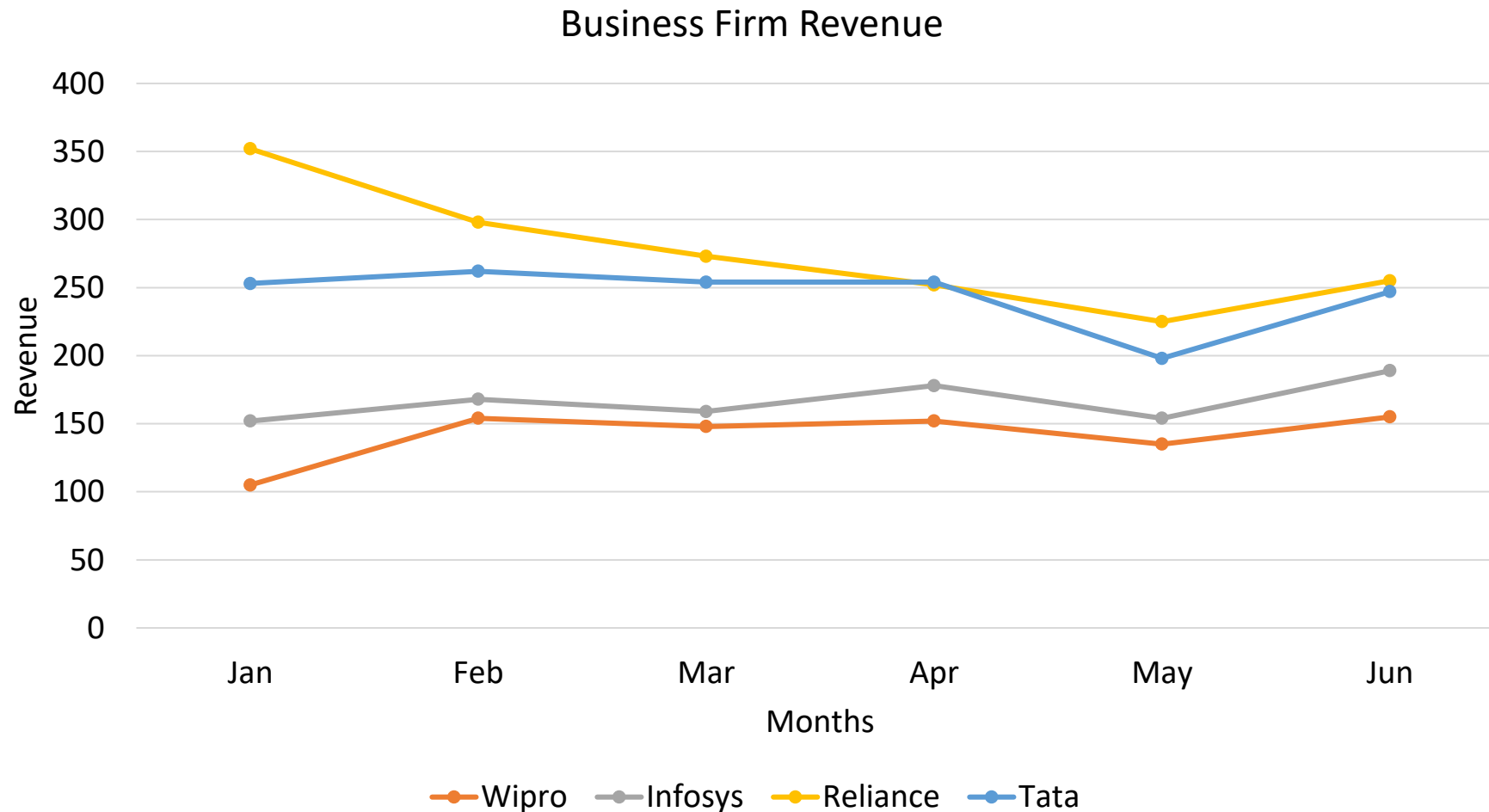
Column Chart

Design Tab – It allows to change chart style, layout, type etc



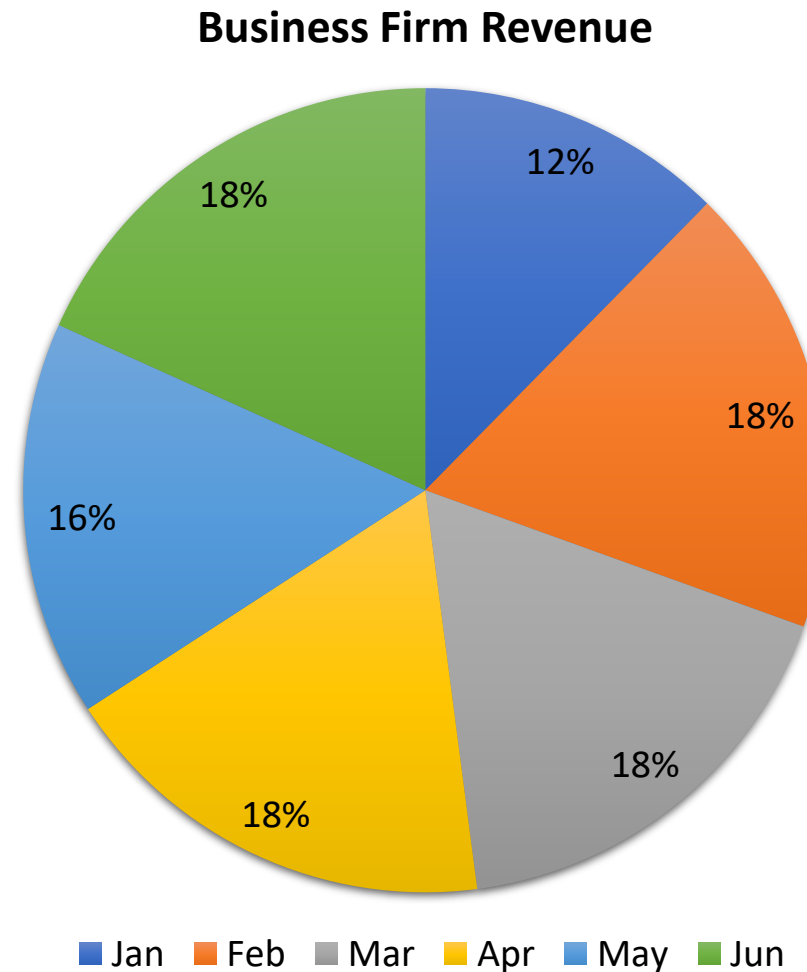
Line Chart

Line chart Shows trends in data at equal intervals



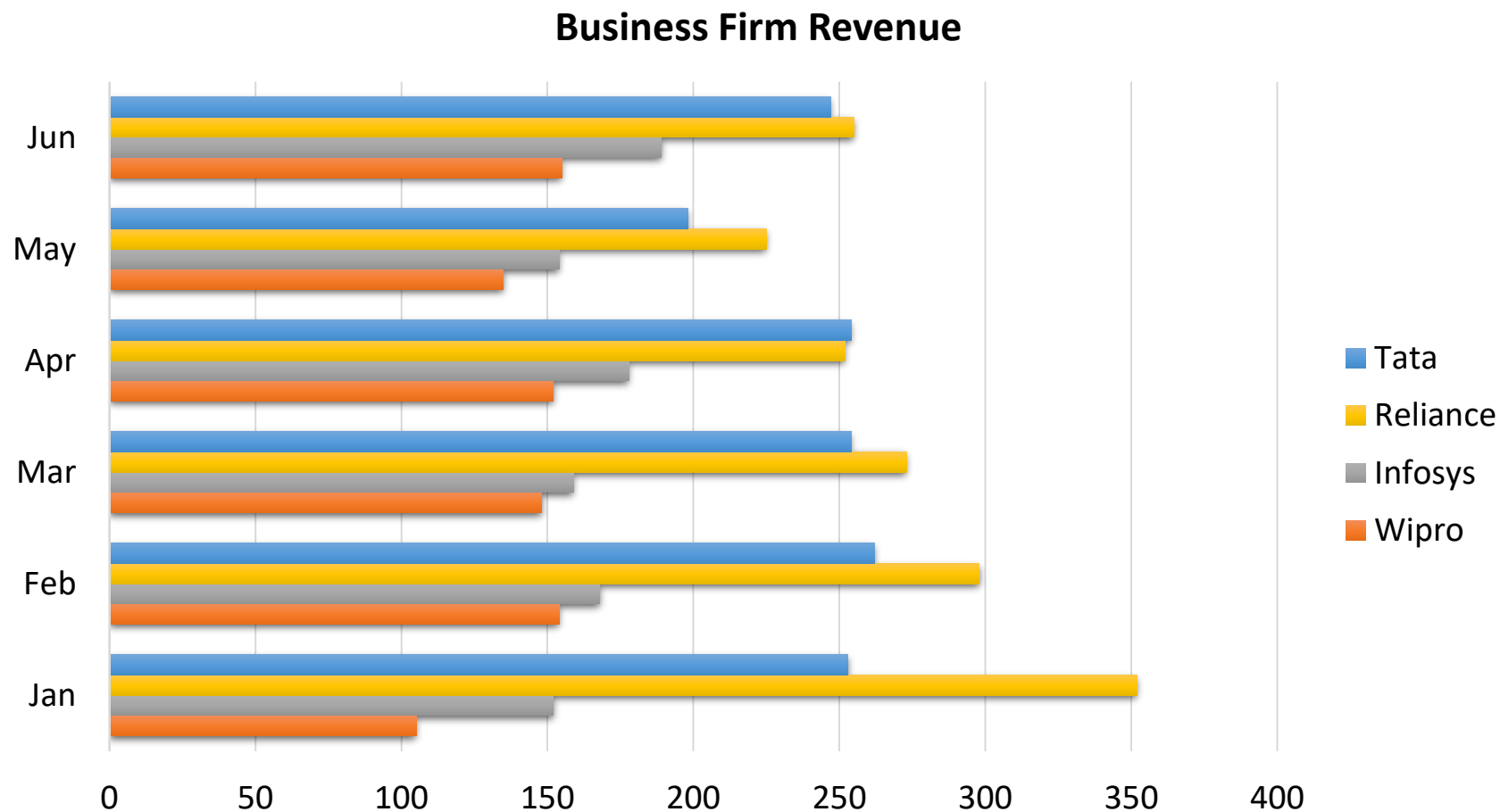
Pie Chart

Pie Chart - Shows proportional size of items that make up a data series; only shows 1 data series



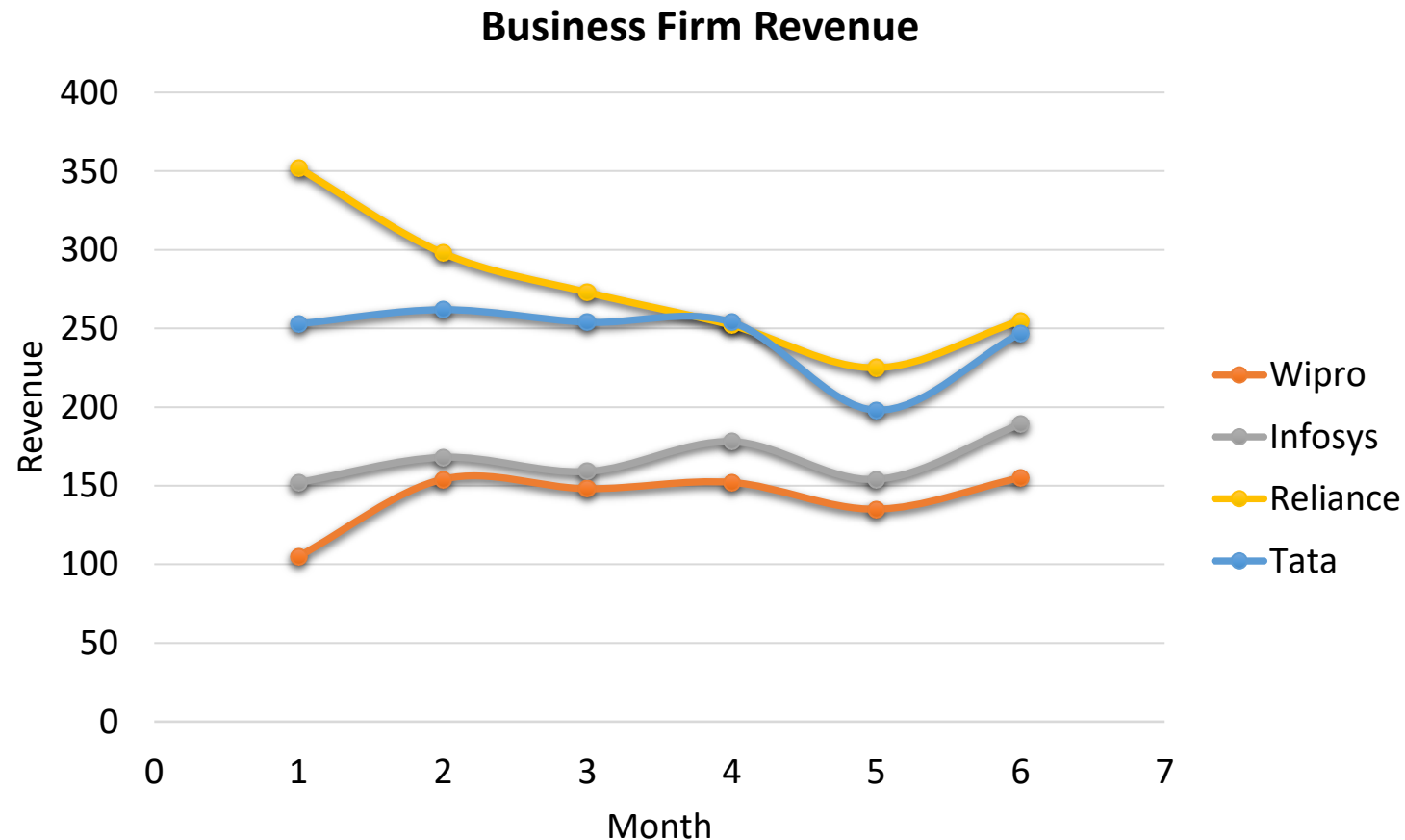
Bar Chart

Bar Chart - Illustrates comparisons among individual items



Scatter Chart

XY (scatter) - Shows relationships among numeric values in several data series or plots two groups of numbers as one series of XY coordinates.



Stock Chart

Stock Chart - Measures volume and has two axes; one for measuring volume, the other for stock prices

